

This step must be performed prior to setting up the new 4:1 menu item!

Nomenclature

- = Control ON / OFF
- = AM / PM
- = Program
- = Temperature
- = Time
- = Enter

Process Steps - 4:1

Part A - Removing an Old 4:1 Menu Item

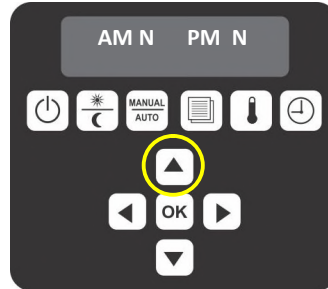
Part B - Removing an Add Item

Part C - Creating an 4:1 Menu Item

3. Press the “RIGHT ARROW” key until the LED reads “4:1”. Press the “ENTER” or “OK” key.



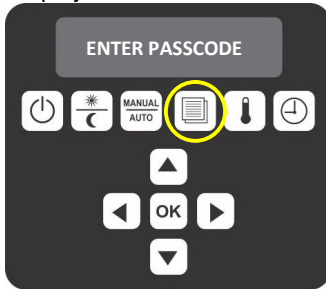
4. Using the “UP” key, select the desired AM/PM option and press the “ENTER” or “OK” key to accept.



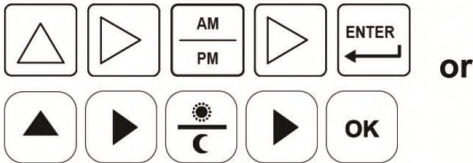
Part A – TURN OFF the Old 4:1 Menu Item

Note: You must get from step 1 thru step 3 within the 10 sec. time frame or you will have to re-enter the passcode.

1. Press the “PROGRAM” key. The LED display will read “ENTER PASSCODE”.



2. Enter the manager’s passcode by pressing the following keys in the order shown:



Press the “ENTER” or “OK” key.

Return to the Main Menu

1. Press the “PROGRAM” key twice.
2. Press the “ENTER” or “OK” key.

Nomenclature

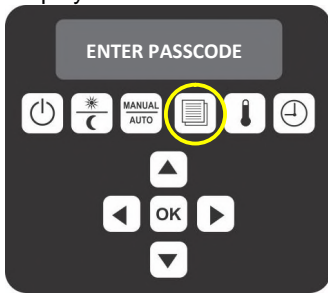
- = Control ON / OFF
- = AM / PM
- = Program
- = Temperature
- = Time
- = Enter

Process Steps - 4:1
 Part A - Removing an Old 4:1 Menu Item
 Part B - Removing an Add Item
 Part C - Creating an 4:1 Menu Item

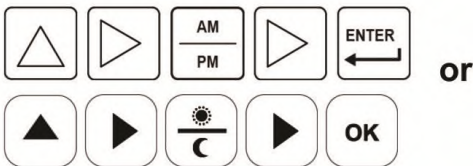
Part B - Removing an Add Item

Note: You must get from step 1 thru step 3 within the 10 sec. time frame or you will have to re-enter the passcode.

1. Press the “PROGRAM” key. The LED display will read “ENTER PASSCODE”.

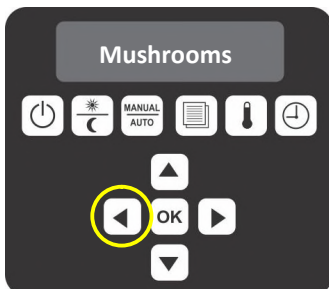


2. Enter the manager’s passcode by pressing the following keys in the order shown:

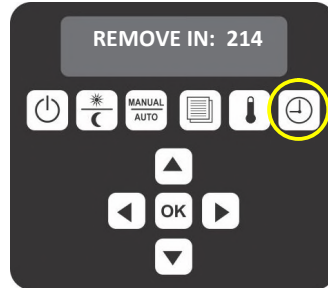


Press the “ENTER” or “OK” key.

3. Press the “LEFT ARROW” key until the LED displays an unused add item. (Example: Mushrooms) Press the “ENTER” or “OK” key.



4. When in the “REMOVE IN” screen press the “TIME” key for 5 sec. The old menu item is removed and a new ADD ITEM will be added.



Return to the Main Menu

1. Press the “PROGRAM” key twice.
2. Press the “ENTER” or “OK” key.

Nomenclature

- = Control ON / OFF
- = AM / PM
- = Program
- = Temperature
- = Time
- = Enter

Process Steps - 4:1

Part A - Removing an Old 4:1 Menu Item

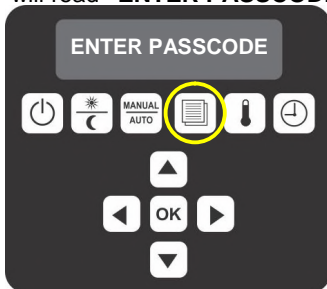
Part B - Removing an Add Item

Part C - Creating an 4:1 Menu Item

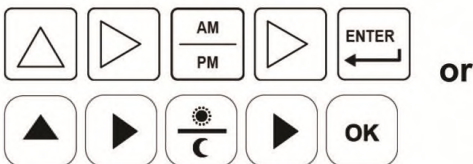
Part C - Creating a 4:1 Menu Item

Note: You must get from step 1 thru step 3 within the 10 sec. time frame or you will have to re-enter the passcode.

1. Press the “PROGRAM” key. The LED display will read “ENTER PASSCODE”.

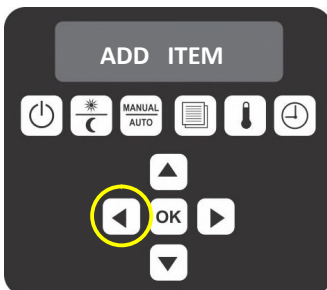


2. Enter the manager’s passcode by pressing the following keys in the order shown:



Press the “ENTER” or “OK” key.

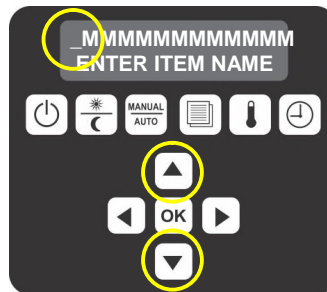
3. Press the “LEFT ARROW” key until the LED reads “ADD ITEM”. Press the “ENTER” or “OK” key.



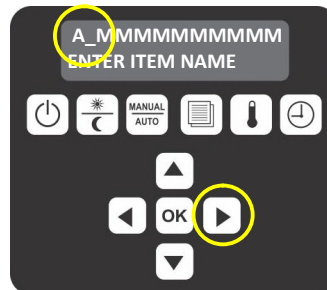
4. Enter the product item name in the top line.



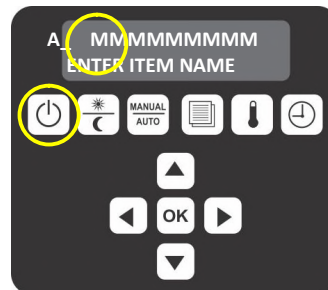
5. Press the “UP” & “DOWN” arrows to change the far left flashing digit to change the number or letter.



6. Press the “RIGHT ARROW” to move to the next number or letter.

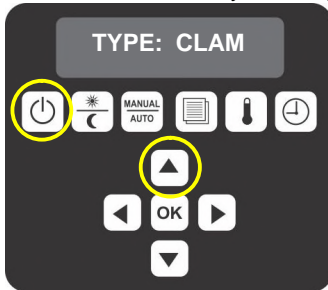


7. Press the “ON-OFF” key to erase a number or letter.



Press the “OK” key to finish naming the product.

8. Using the “UP” key, select the “CLAM” or “FLAT” option and press the “ENTER” or “OK” key to accept.



9. Using the “UP” key, select one of the gap stages options (0,1,2,3), and press the “ENTER” or “OK” key to accept.



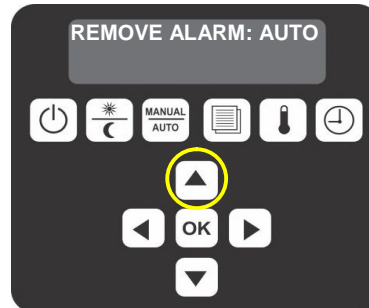
10. Using the “UP” key, select the desired AM/PM option and press the “ENTER” or “OK” key to accept.



11. For the “REMOVE IN” option use the “ON/OFF” key to scroll left or right and the “UP ARROW” to change the number. Press the “ENTER” or “OK” key to accept.



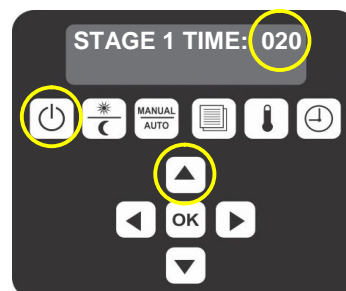
12. Using the “UP ARROW” key, select the “MANUAL” or “AUTO” options and press the “ENTER” or “OK” key to accept.



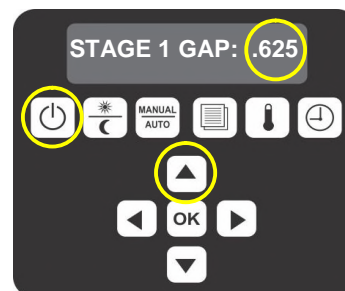
13. Using the same keys in Step 11, enter in your “REMOVE GAP” numbers. Press the “ENTER” or “OK” key to accept.



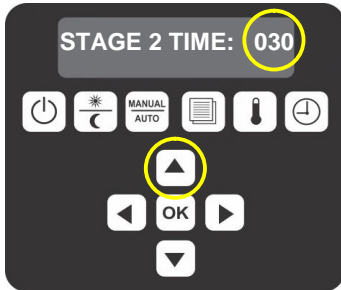
14. Enter in your “STAGE 1 TIME” numbers. Press the “ENTER” or “OK” key to accept.



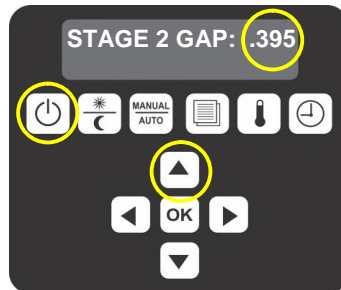
15. Enter in your “STAGE 1 GAP” numbers. Press the “ENTER” or “OK” key to accept.



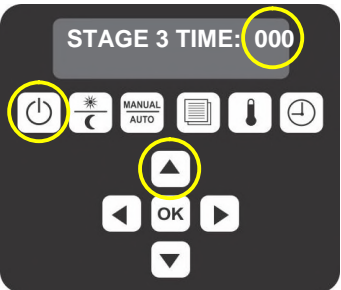
16. Enter in your “STAGE 2 TIME” numbers.
Press the “ENTER” or “OK” key to accept.



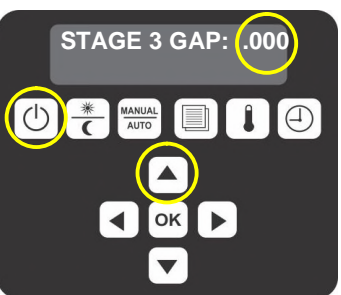
17. Enter in your “STAGE 2 GAP” numbers.
Press the “ENTER” or “OK” key to accept.



18. Enter in your “STAGE 3 TIME” numbers.
Press the “ENTER” or “OK” key to accept.



19. Enter in your “STAGE 3 GAP” numbers.
Press the “ENTER” or “OK” key to accept.



20. Enter in your “MUST REMOVE IN” numbers.
Press the “ENTER” or “OK” key to accept.



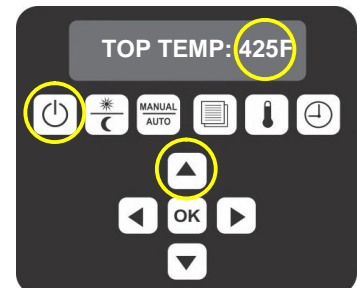
21. Enter in your “PREP BREAD IN” numbers.
Press the “ENTER” or “OK” key to accept.



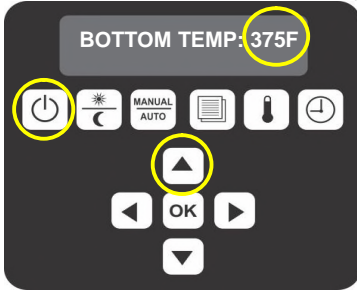
22. Enter in your “PREP ALARM IN” option.
Press the “ENTER” or “OK” key to accept.



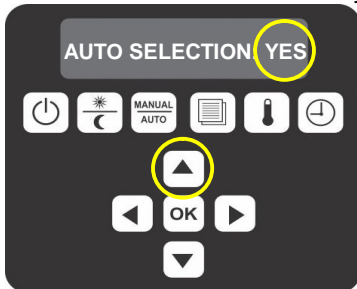
23. Enter in your “TOP TEMP” numbers.
Press the “ENTER” or “OK” key to accept.



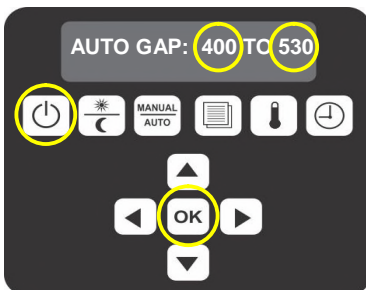
24. Enter in your “**BOTTOM TEMP**” numbers.
Press the “**ENTER**” or “**OK**” key to accept.



25. Enter in your “**AUTO SELECTION**” option.
Press the “**ENTER**” or “**OK**” key to accept.



26. Enter in your “**AUTO GAP**” options.
Set in the first group of numbers (ex: 400),
Press the “**ENTER**” or “**OK**” key to accept.
Set in the second group of numbers (ex: 530),
Press the “**ENTER**” or “**OK**” key to accept.



Return to the Main Menu

1. Press the “**PROGRAM**” key twice.
2. Press the “**ENTER**” or “**OK**” key.