

Why	To maintain food safety and food quality standards	
Time required	15 minutes to prepare	15 minutes to complete
Time of day	Pre-opening	For 24-hour restaurants: early a.m.

Hazard icons  Electricity  Hot Surfaces  Sharp Objects/Surfaces

Tools and supplies



Digital pyrometer with surface probe

Procedure

- Turn fan interlock switch to "ON."
Make sure the fan interlock switch is in the "ON" position.

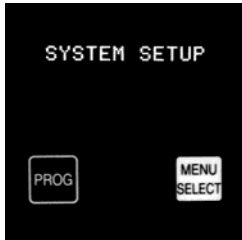


Proceed to Step 1 on page 3 for C832, C834, C835, C836, C842 C844 & C845, only.

- Display software version.
The grill should be at operating temperature. Press and hold the "PROG" key until the software version is displayed on the screen.



- Access system set-up.
Press the "PROG" key twice. The message "SYSTEM SETUP" should be displayed.

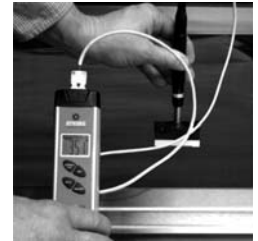


- Access calibration function.
Press and release the "MENU" key once to display the "PROBE CALIBRATION" message.



Press the "TEMP" key to display the current heat zone and temperature. There are four heat zones: front, center, back, and top. Typically, you'll start with the front zone.

- Measure grill temperature.
Be sure you are measuring the heat zone shown on the grill display. Using a properly calibrated pyrometer with a grill surface probe, place the surface probe in the center of the heat zone. Allow the temperature to stabilize for 10 seconds.



continued ►

★ Tip
To achieve the most accurate reading on the pyrometer, place the surface probe in the center of the cooking zone.

⚠ Hot Surfaces
The grill surface is extremely hot.

Calibrate grill heat zones (continued)

- 6 Calibrate grill temperature.**
Compare the temperature readings on the grill controls and pyrometer. If the temperature display is more or less than 5°F (3°C) from the temperature shown on the pyrometer, adjust the grill temperature.



To increase the grill temperature to match the pyrometer temperature, press the up-arrow key. To decrease the temperature, press the down-arrow key.

- 7 Display next heat zone.**
Press the “TEMP” key to display another heat zone.



- 8 Calibrate other heat zones.**
Repeat steps 5 through 7 to calibrate the center, back, and top heat zones.

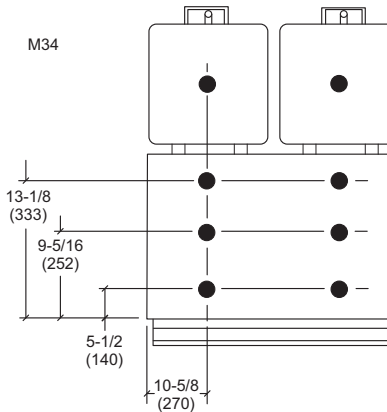
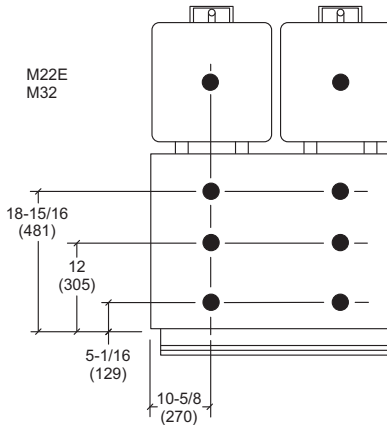
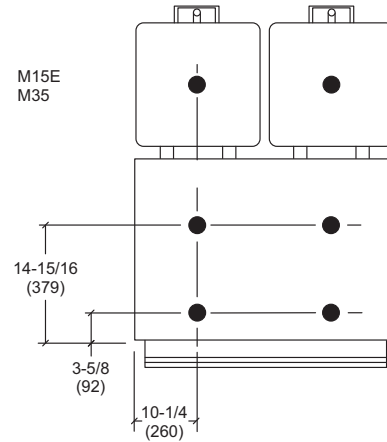


- 9 Return to operating mode.**
Press the “MENU SELECT” key to return to the “PROBE CALIBRATION” display or press the “PROG” key to return to the ‘SYSTEM SETUP’ display. Press the right-arrow key to return to the operating mode.



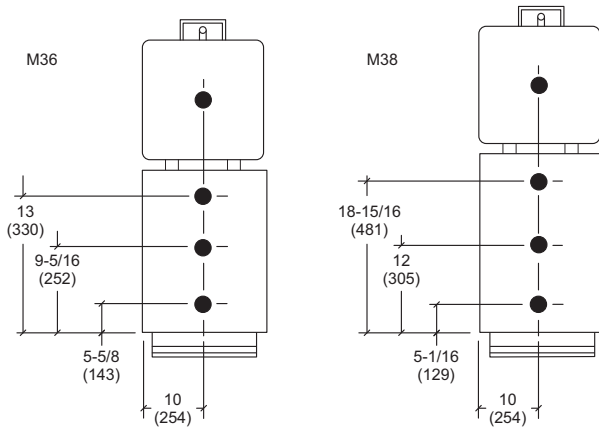
Thermocouple probes are located front to rear on the lower grill plates and the upper platens. The measurements should be taken from front to back and left to right on all model grills.

The following illustrations identify the probe locations for the Model 15E/35, 22E/32, 34, 36/38 grills.



continued ►

Calibrate grill heat zones (continued)



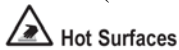
Models C832, C834, C835, C836, C842, C844, & C845 Only:

- Place the fan interlock switch in the "ON" position.
For grill markets that use lower release material sheets, probe calibration is performed with both the upper and lower release sheets installed.

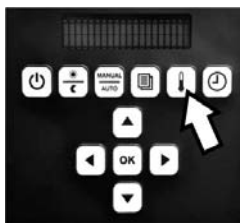


For grill markets that do not use lower release material sheets, probe calibration is performed without the upper release sheets installed.

The upper platen(s) and the lower grill plate should be at operating temperatures to perform calibration procedures. Allow the grill to reach temperature set points and stabilize (15 minutes).



- Enter the PROBE CALIBRATION screen.
Press and hold the TEMPERATURE key for 3 seconds to enter the PROBE CALIBRATION screen.



- Measure the temperature of the first heat zone.
Place a pyrometer surface probe on the selected heat zone, per the thermocouple probe location illustrations on page 4. Allow the temperature to stabilize for approximately 10 seconds and note the temperature reading.

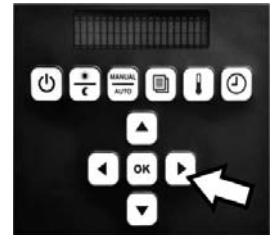


If the displayed temperature on the controller is more than 5°F/3°C different from the pyrometer surface probe display, perform the following:

Press the UP arrow key to increase the temperature to match the displayed temperatures.

Press the DOWN arrow key to decrease the temperature to match the displayed temperatures.

- Calibrate the remaining heat zones.
Use the right arrow key to move to the next zone to be calibrated. Repeat the calibration steps for each heat zone.



- Save all changes.
Once all calibrations are complete, press the "OK" key to save all changes.

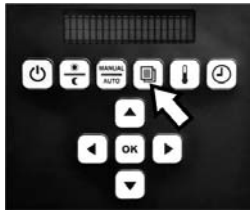


continued ▶

Calibrate grill heat zones (continued)

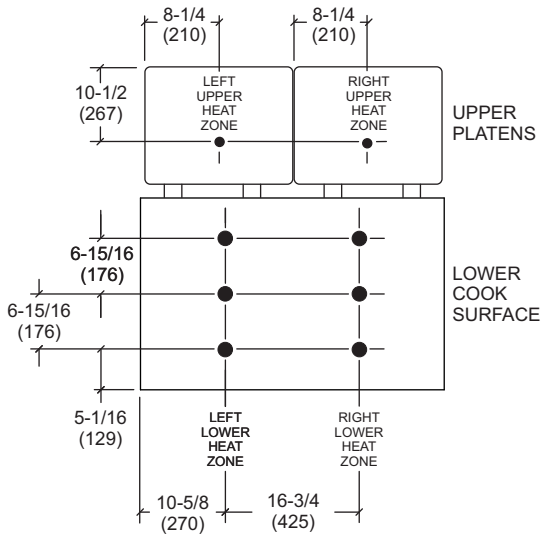
6 Return to the AM/PM AUTO Mode.

Press the PROGRAM key to return to the AM/PM AUTO Mode, or wait 5 seconds and the system will automatically time-out and return to the AM/PM AUTO Mode.

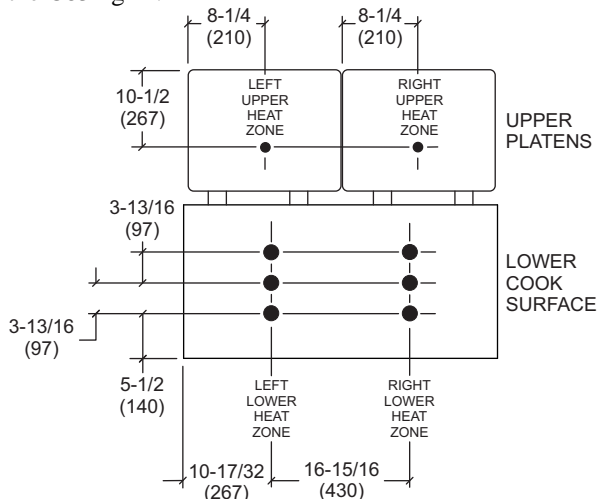


Thermocouple probes are located front to rear on the lower grill plates and the upper platens. The measurements should be taken from front to back and left to right on all model grills.

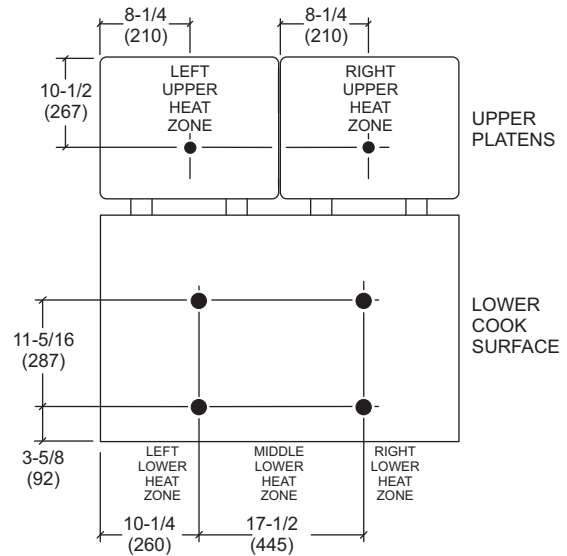
The following illustration identifies the probe locations for the C832 grill.



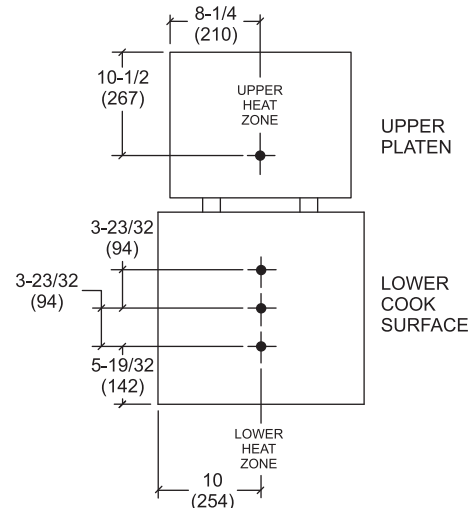
The following illustration identifies the probe locations for the C834 grill.



The following illustration identifies the probe locations for the C835 grill.



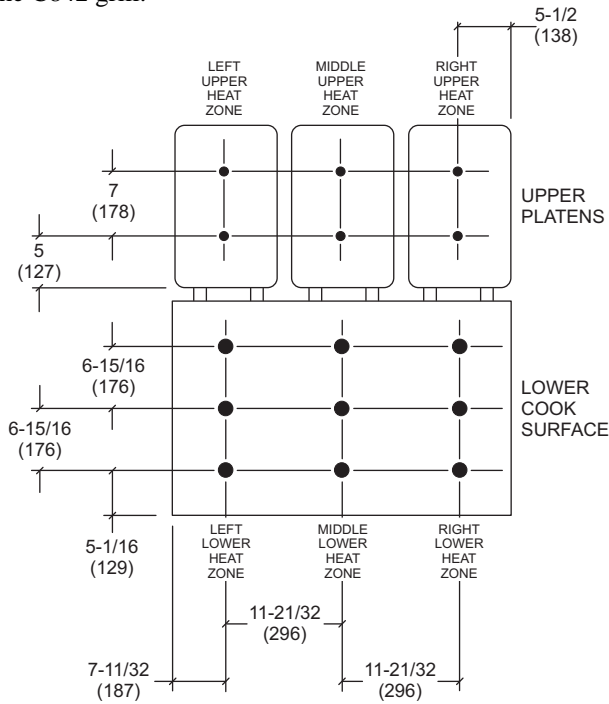
The following illustration identifies the probe locations for the C836 grill.



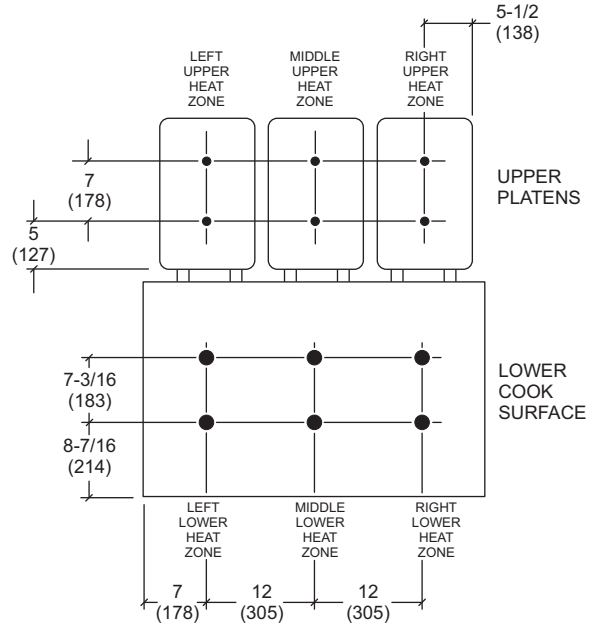
continued ▶

Calibrate grill heat zones (continued)

The following illustration identifies the probe locations for the C842 grill.



The following illustration identifies the probe locations for the C845 grill.



The following illustration identifies the probe locations for the C844 grill.

